

# ON WISCONSIN!

Alto Sax

**A**

*mf*

9

**B**

24

*f*

32

Fine **C** Drum Break **16** D.C.

# ON WISCONSIN!

Baritone

**A**

*mf*

8

15

**B**

*mf*

23

*f*

29

**Fine**

33

**C Drum Break**

**16**

**D.C.**

# ON WISCONSIN!

B $\flat$  Clarinet

**A**

*mf*

9

**B**

17

24

*f*

32

Fine **C** Drum Break **16** D.C.

# ON WISCONSIN!

B $\flat$  Trumpet 1

**A**

Musical staff for section A, measures 1-8. The key signature is B-flat major (two flats). The music begins with a mezzo-forte (*mf*) dynamic. The notes are: G4 (quarter), F4 (quarter), E4 (quarter), D4 (quarter), C4 (half), B3 (half), A3 (half), G3 (half).

Musical staff for section A, measures 9-16. The notes are: G3 (half), F3 (half), E3 (half), D3 (half), C3 (half), B2 (half), A2 (half), G2 (half).

**B**

Musical staff for section B, measures 17-23. The notes are: G4 (quarter), F4 (quarter), E4 (quarter), D4 (quarter), C4 (half), B3 (half), A3 (half), G3 (half).

Musical staff for section B, measures 24-31. The music begins with a forte (*f*) dynamic. The notes are: G4 (quarter), F4 (quarter), E4 (quarter), D4 (quarter), C4 (half), B3 (half), A3 (half), G3 (half).

Musical staff for section C, measures 32-47. The staff begins with a **Fine** marking. The notes are: G4 (quarter), F4 (quarter), E4 (quarter), D4 (quarter), C4 (half), B3 (half), A3 (half), G3 (half). This is followed by a **C Drum Break** section, indicated by a thick black bar, lasting for **16** measures. The section concludes with a **D.C.** (Da Capo) marking.

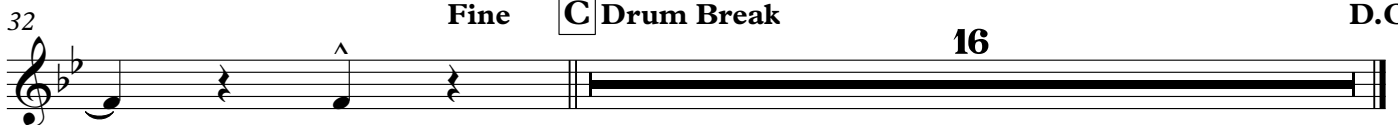
# ON WISCONSIN!

B $\flat$  Trumpet 2

**A**



**B**



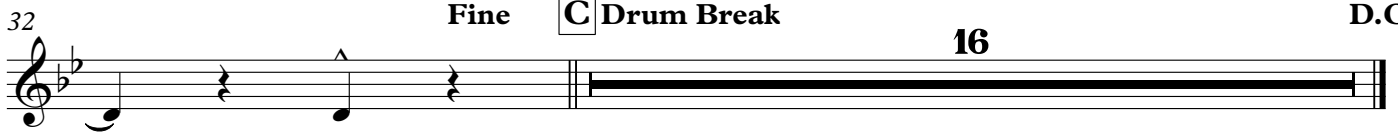
# ON WISCONSIN!

B $\flat$  Trumpet 3

**A**



**B**



Fine

**C** Drum Break

16

D.C.

Flute

# ON WISCONSIN!

**A**

*mf*

7

12

**B**

17

24

29

32

Fine **C** Drum Break 16 D.C.

# ON WISCONSIN!

Mellophone

**A**

8

**B**

23

32

Fine **C** Drum Break 16 D.C.



# ON WISCONSIN!

Tenor Sax

**A**

9

17 **B**

24

32 **Fine** **C Drum Break** **16** **D.C.**

# ON WISCONSIN!

## Trombone 1

**A**

Musical staff for section A, measures 1-8. The staff is in bass clef with a key signature of two flats (B-flat and E-flat) and a common time signature (C). The music begins with a mezzo-forte (*mf*) dynamic. The notes are: 1. dotted quarter, eighth rest, quarter, quarter; 2. quarter, quarter, quarter, quarter; 3. quarter, quarter, quarter, quarter; 4. quarter, quarter, quarter, quarter; 5. quarter, quarter, quarter, quarter; 6. quarter, quarter, quarter, quarter; 7. quarter, quarter, quarter, quarter; 8. quarter, quarter, quarter, quarter.

9

Musical staff for section A, measures 9-16. The notes are: 9. quarter, quarter, quarter, quarter; 10. quarter, quarter, quarter, quarter; 11. quarter, quarter, quarter, quarter; 12. quarter, quarter, quarter, quarter; 13. quarter, quarter, quarter, quarter; 14. quarter, quarter, quarter, quarter; 15. quarter, quarter, quarter, quarter; 16. quarter, quarter, quarter, quarter.

**B**

17

Musical staff for section B, measures 17-23. The notes are: 17. quarter, quarter, quarter, quarter; 18. quarter, quarter, quarter, quarter; 19. quarter, quarter, quarter, quarter; 20. quarter, quarter, quarter, quarter; 21. quarter, quarter, quarter, quarter; 22. quarter, quarter, quarter, quarter; 23. quarter, quarter, quarter, quarter.

24

Musical staff for section B, measures 24-31. The notes are: 24. quarter, quarter, quarter, quarter; 25. quarter, quarter, quarter, quarter; 26. quarter, quarter, quarter, quarter; 27. quarter, quarter, quarter, quarter; 28. quarter, quarter, quarter, quarter; 29. quarter, quarter, quarter, quarter; 30. quarter, quarter, quarter, quarter; 31. quarter, quarter, quarter, quarter.

32

Fine **C** Drum Break **16** D.C.

Musical staff for section C, measures 32-47. The staff begins with a quarter note, a quarter rest, and a quarter note with an accent (^). This is followed by a double bar line and a thick black bar representing a 16-measure drum break. The staff ends with a double bar line.



# ON WISCONSIN!

Tuba

**A**

*mf*

8

15

**B**

22

28

32

Fine

**C** Drum Break

16

D.C.